



TJEP RC20 Rod Cutter



Technical specifications

Model No.	TJEP RC20 Rod Cutter
TJEP No.	102940
Weight	3.45 kg
Power Supply	240V- 50 Hz, 4.6 Amp, Single phase
Electric Motor Type	1100 Watt Double Insulated
No-Load Blade Speed	2,000 RPM
Max Cutting Capacity	20 mm
Max Blade Diameter	110 mm

Declaration of conformity

We

Benner-Nawman Inc.
3450 Sabin Brown Rd. Wickenburg, AZ 85390, USA

As the manufacturer declare, under our sole responsibility, that the product

TJEP RC20 Rod Cutter

Conforms with following specifications:

EMC: EN 55014-1:2006/+A1:2009/+A2:2011, EN 55014-2:2015, EN 61000-3-2:2014, EN 61000-3-3:2013

Machine Directive: EN60745-1:2009+A11:2010

RoHS: EN13428, EN13429, EN 13430, EN13431, EN13432

The product herewith complies with the requirements of the EU directives:

2014/30/EU relating to electromagnetic compatibility (EMC),
2006/42/EC relating to the Machinery Directive (MD)
2011/65/EU relating to the restrictions of hazardous substances (RoHS)

Serial number:

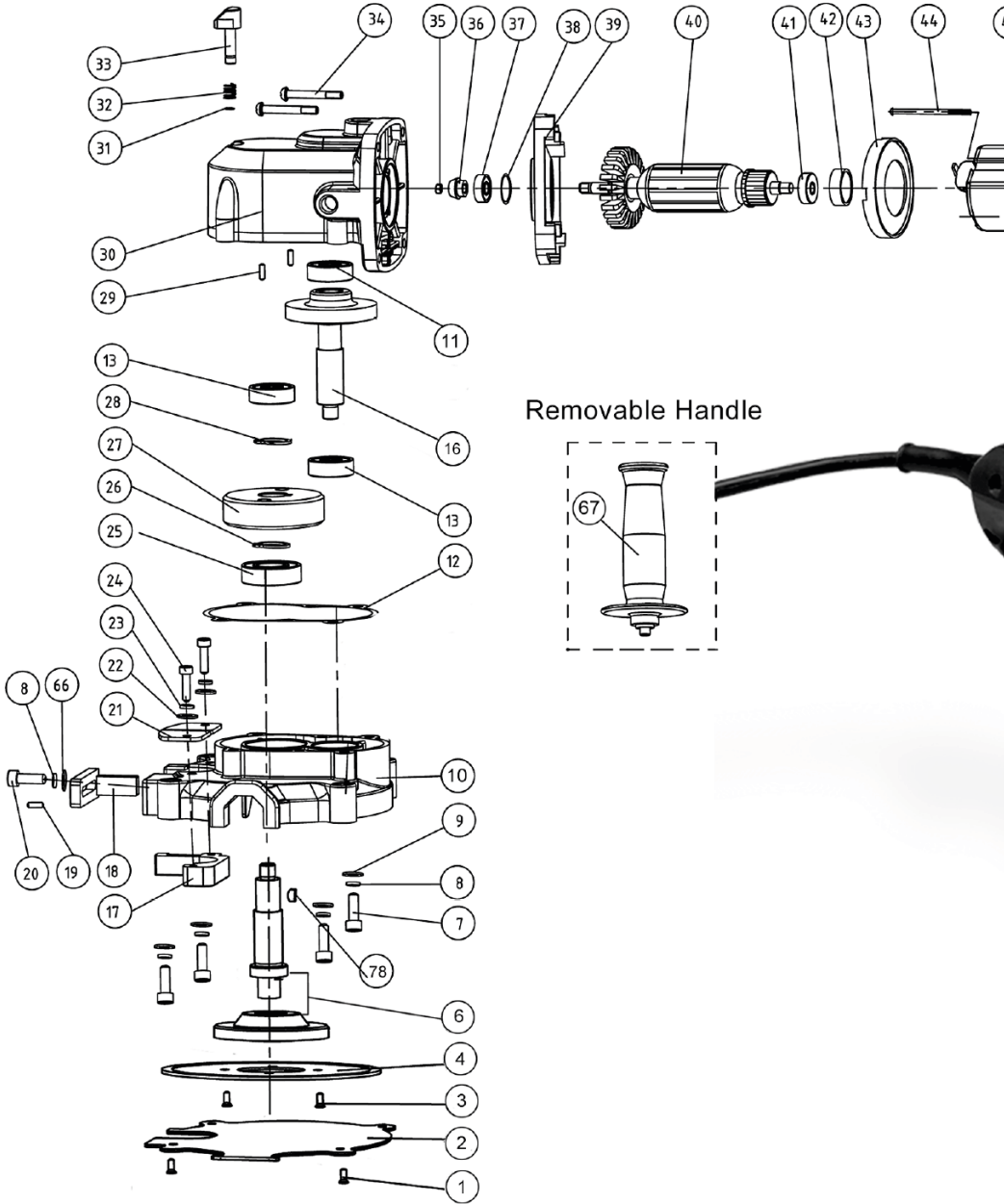
Signed:

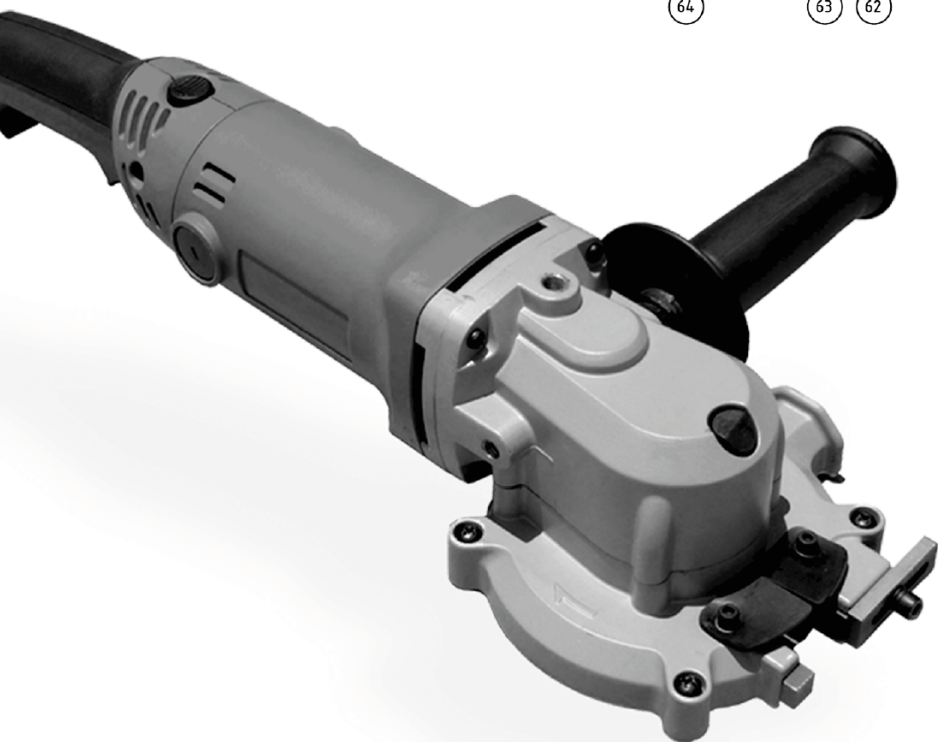
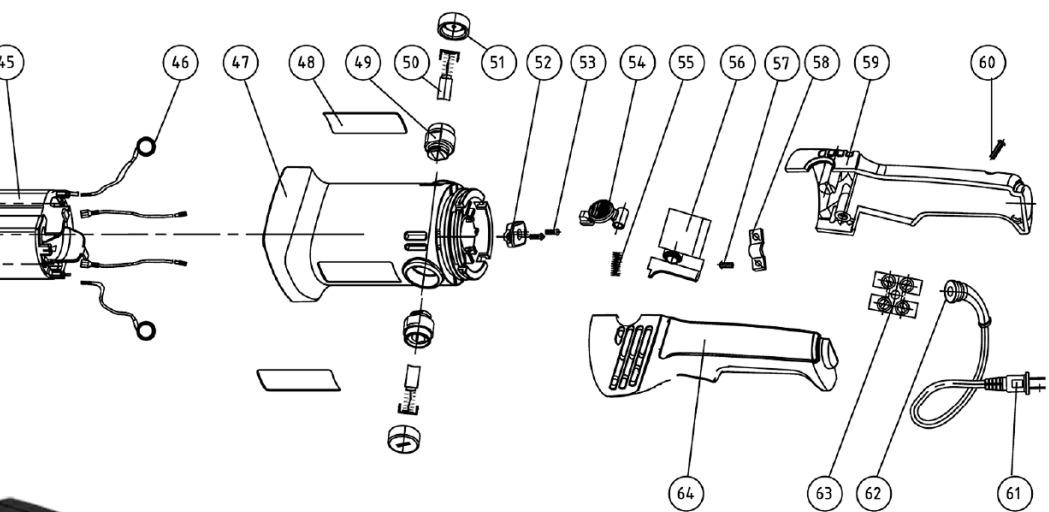


Authorized contact in EU to compile the Technical File:

KYOCERA UNIMERCO Fastening A/S
Drejervej 2, DK-7451 Sunds
Tel: +45 97 14 14 40
Mr. Ebbe Hornstrup

TJEP RC20 Rod Cutter





Spareparts

ITEM NO.	PART NO.	DESCRIPTION
1	BNCEP1-71	Hexagon Socket Screw (M5X15)
2	BNCEP1-72	Bottom Plate Guard (New)
3	BNCEP1-73	Hexagon Socket Screw (M5X8)
4	RB-BNCE-KNH	Blade - WO/Hub
6	BNCEP1-75	Blade Flange and Spindle
7	BNCEP-07	Hexagon Socket Head Cap head Screw M5X30
8	BNCEP-08	Lockwasher
9	BNCEP-09	Washer 5mm
10	BNCEP1-77	Aluminum Housing
12	BNCEP-12	Gear Housing Gasket
13	BNCEP-13	Ball Bearing 628-2Z
16	BNCEP-16	Bevel Gear Assy W/Shaft
17	BNCEP-17	Fixed Cutting Guide
18	BNCEP-18	Movable Cutting Guide
19	BNCEP-19	Pin A5X10
20	BNCEP-20	Hexagon Socket Head Cap head Screw M5X15
21	BNCEP-21	Left and Right Rubber Guard
22	BNCEP-22	Washer 5mm
23	BNCEP-23	Lock Washer 4mm
24	BNCEP-24	Hexagon Socket Head Cap Screw M4-20
25	BNCEP-25	Ball Bearing 6002-2RS
26	BNCEP-26	Spacer
27	BNCEP-27	Big Gear
28	BNCEP-28	Shaft Clip 15
29	BNCEP-29	Pin A5X16
30	BNCEP-30	Aluminum Gear Housing
31	BNCEP-31	Steel Ring 6mm
32	BNCEP-32	Spring for Blade Lock
33	BNCEP-33	Lock Button for Blade
34	BNCEP-34	Phillips Pan Head Tapping Screw ST4.2X32
35	BNCEP-35	Hex Nut M6
36	BNCEP-36-A	Bevel Pinion
37	BNCEP-37	Ball Bearing 6002-2Z

ITEM NO.	PART NO.	DESCRIPTION
38	BNCEP-38	O-Ring 25X2
39	BNCEP-39	Center Housing Plate
40	BNCEP-40	Armature, 230V
41	BNCEP-41	Ball Bearing 607-2RS
42	BNCEP-42	Bearing Bushing
43	BNCEP-43	Fan Guide
44	BNCEP-44	Phillips Head Tapping Screw ST4.2X70
45	BNCEP-45	Stator Coil, 230V
46	BNCEP-46	Electrical Connector
47	BNCEP-47	Motor Housing
49	BNCEP-49	Brush Holder
50	BNCEP-50	Carbon Brush Set
51	BNCEP-51	Brush Cap
52	BNCEP-52	Plate for Inner Wire
53	BNCEP-53	Phillips Pan Head Tapping Screw ST2.9X9.5
54	BNCEP-54	Rotation Button for Handle
55	BNCEP-55	Spring for Rotation Button
56	BNCEP-56	Trigger Switch, 230V
57	BNCEP-57	Phillips Pan Head Tapping Screw ST4.2X13
58	BNCEP-58	Cord Retaining Clamp
59	BNCEP-59	Right Handle
60	BNCEP-60	Phillips Pan Head Tapping Screw ST4.2X16
61	BNCEP-61	Power Cord - 230V
62	BNCEP-62	Cord Armor
63	BNCEP-63	Terminal
64	BNCEP-64	Left Handle
66	BNCEP-66	Washer 5mm
67	BNCEP-67	Three Position Side Handle
68	BNCEP-68	Particle Collection Bag
78	BNCEP1-78	Key for Blade Spindle



KYOCERA UNIMERCO Fastening A/S
Drejervej 2
DK-7451 Sunds
Tlf. +45 97 14 14 40
Fax +45 97 14 14 86
tjep@kyocera-unimerco.com

www.tjep.eu